



SOCIAL CLIMBERS

Putting fresh heads and faster funds into local, social businesses.

CAPACITY

FUNDAMENTALS

The Liverpool City Region is a place of firsts, and when it comes to new thinking in health and social care, that theme is strong.

At Capacity, we've accessed funding to offer our time and match cash to help local social businesses chip away at some of our region's key health and social care challenges.

We're supporting great organisations and passionate people across themes including mental health, family support and service useability, offering fresh heads, additional resource, understanding and time.

Whether it's building stronger finances, getting governance right, growing connectivity with the public sector or scaling something which is already having a decent impact, we're making things happen.

Together, we're navigating the sometimes complex world of public sector working, offering skills, tools and connections to take our region's boldest ideas... bigger.



Funded by
UK Government

POWERED BY

LEVELLING
UP

Supported by players of



Awarded funds from



WHAT ARE WE DOING AND WHO ARE WE WANTING TO WORK WITH?



We're feeling social

This project is exclusively about social businesses, charities and other socially trading organisations. We're working with organisations that have a strong social purpose connected to health and social care.



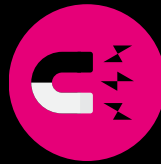
We're zooming in

We're keeping our focus tight, this time we're zoning in on mental health, family support and better ways to help local people work with social businesses to inform and then design services that better meet their specific needs.



We're not starting from scratch

These organisations can be big or small, established or relatively new - that bit doesn't matter. What is important is their impact, they need to be creating visible change in the field of health and social care.



We're hoping to find some matches

Wherever possible, partner organisations are providing some form of match funding - this shows commitment to the work and helps our core funds go further. However, we appreciate this isn't always possible. So, if affordability is a barrier, let's chat and see if we can find some flexibility.



We've got deadlines to meet

The funding for this project runs until March 2025. So we're selecting pieces of work with goals that are achievable within that timeframe.



We're not boxing things up

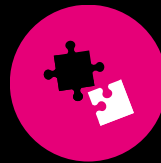
Our support packages are bespoke, so we're adapting our advice and guidance into a range of areas, specific to each organisation's individual needs.



We know where we can help

We're offering support across four key areas:

- growing existing ideas (things that are already up and running but could do more)
- building solid ground (whether that's financially, through the right governance or ensuring listening is at the forefront)
- capability (growing great leaders, understanding impact and building connections)
- navigating opportunities for getting money into growing business - linking in to supportive social investors



We're joining forces

We aren't going to change public services for the better on our own, and neither is anyone else. So, we're working as part of a bigger project in partnership with like-minded organisations including Postcode Innovation Trust, Kindred LCR, the School for Social Entrepreneurs and Liverpool John Moores University.



We're making new connections

We're using our experience of working with commissioners to bring in new viewpoints, helping people understand things from a public sector perspective, (and vice versa). We're helping teams develop this thinking and get themselves 'pitch ready'.



WANT TO FIND OUT MORE?

Contact Ailsa Horne our project lead on...

ailsa.horne@thisiscapacity.co.uk